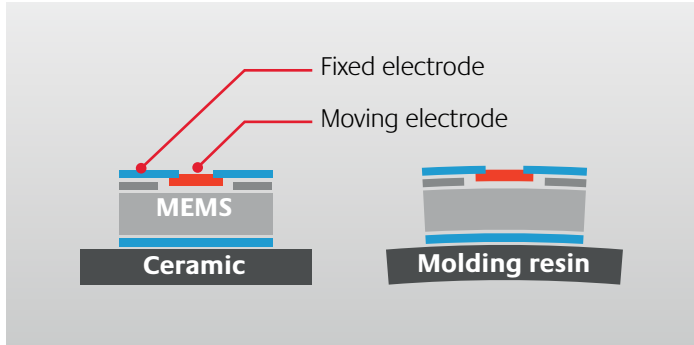


CERAMIC PACKAGES FOR SENSOR INERTIAL SENSOR PACKAGE



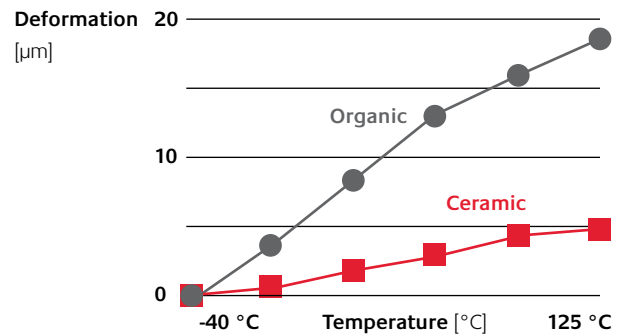
APPLICATIONS

- ▶ Electronic Stability Control (ESC)
- ▶ Roll over sensor
- ▶ Sensor for ADAS (Advanced Driver Assistance Systems)

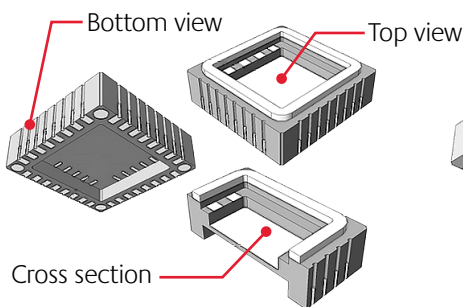
FEATURES

- ▶ Small size: 5 mm - 10 mm
- ▶ Solder fillet suitable for AOI (Automated Optical Inspection)
- ▶ Hermetic: seam weld, AuSn, solder
- ▶ High rigidity: high accuracy sensor

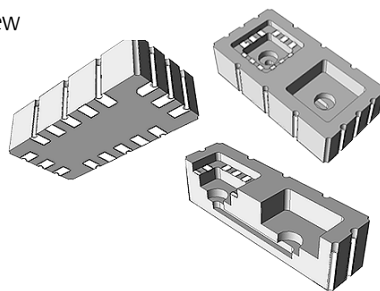
PRODUCT TREND



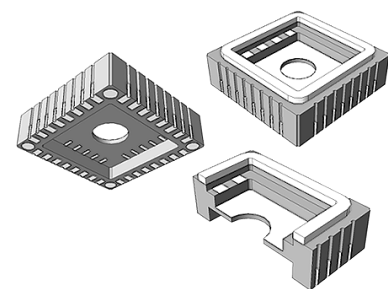
VARIOUS PACKAGE STRUCTURES



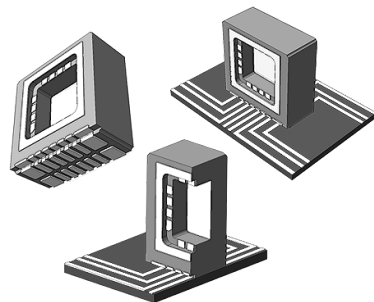
Both sides cavity



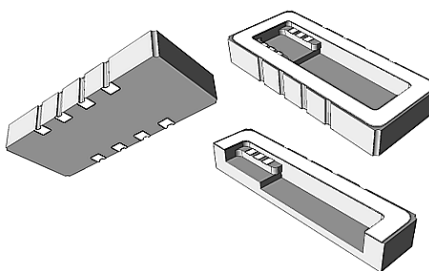
Dual cavity + air through hole



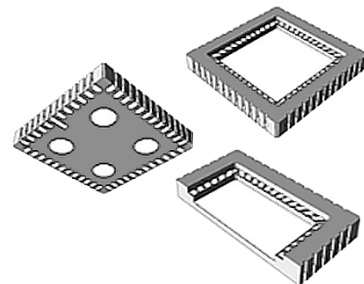
Both sides cavity + air through hole



Vertical assemble



LCC (Type 1)



LCC (Type 2)